

WEIGHT AND CENTER OF GRAVITY	DIMENSIONS MM (IN)			WEIGHT kg (lbs)
	A	B	C	
150KW CAPACITY FRAME- 1 50KW UPM INSTALLED	839 [33.0]	530 [20.9]	282 [11.1]	359 [792]
150KW CAPACITY FRAME- 2 50KW UPM INSTALLED	915 [36.0]	530 [20.9]	282 [11.1]	423 [932]
150KW CAPACITY FRAME- 3 50KW UPM INSTALLED	1014 [39.9]	530 [20.9]	282 [11.1]	487 [1073]

UPS RATING		AC INPUT VOLTAGE	AC OUTPUT VOLTAGE	AC INPUT/BYPASS CURRENT	AC OUTPUT CURRENT	MAX HEAT DISSIPATION AT 100% LOAD	DC INPUT VOLTAGE	DC INPUT CURRENT (432/480V)
KVA	KW	V	V	AMP	AMP	KW (BTU/HR)	V	AMP
20	20	480	480	35	24	0.75 [2550]	432/480	50/45
30	30			48	36	1.05 [3580]		74/67
40	40			60	48	1.34 [4560]		99/89
50	50			73	60	1.67 [5700]		124/111
60	60			94	72	2.10 [7164]		149/134
70	70			108	84	2.45 [8358]		165/156
80	80			120	96	2.67 [9121]		198/178
90	90			133	108	3.01 [10261]		223/200
100	100			146	120	3.34 [11402]		247/223
110	110			168	132	3.68 [12542]		272/245
120	120			181	144	4.01 [13682]		297/267
130	130			193	156	4.34 [14822]		322/289
140	140			206	168	4.68 [15962]		346/312
150	150			218	180	5.01 [17102]		371/334

WIRES	ACCEPTED WIRE RANGE	TORQUE RATING N*MM (LB.IN)	RECOMMENDED MINIMUM WIRE SIZE FOR 75 DEG C COPPER STRANDED WIRE (WIRE SIZES ARE FOR 150KW)
INPUT PHASE WIRES	(2) 6AWG-250MCM PER PHASE	31 [275]	(2) 2/0 PER PHASE
BYPASS PHASE WIRES			(2) 2/0 PER PHASE
OUTPUT PHASE WIRES			(2) 1AWG PER PHASE **SEE NOTE**
DC INPUT FROM BATTERY	(4) 6AWG-300MCM		IBC-L: (2) 3/0 IBC-LH: (2) 300 MCM
GROUND WIRES (INPUT, BYPASS, AND OUTPUT)	(6) 14AWG-1/0	8 AWG	4.5 [40]
		4 AWG-6 AWG	5.1 [45]
		3 AWG-1/0	5.6 [50]
GROUND WIRES (BATTERY)	(6) 14AWG-1/0	8 AWG	4.5 [40]
		4 AWG-6 AWG	5.1 [45]
		3 AWG-1/0	5.6 [50]
CONTROL WIRE (DETAIL C)	12-22 AWG	0.56-0.79 [5-7]	TWISTED PAIR WIRES 18AWG
CONTROL WIRE (DETAIL B,D)	14-30 AWG	0.22-0.25 [2]	

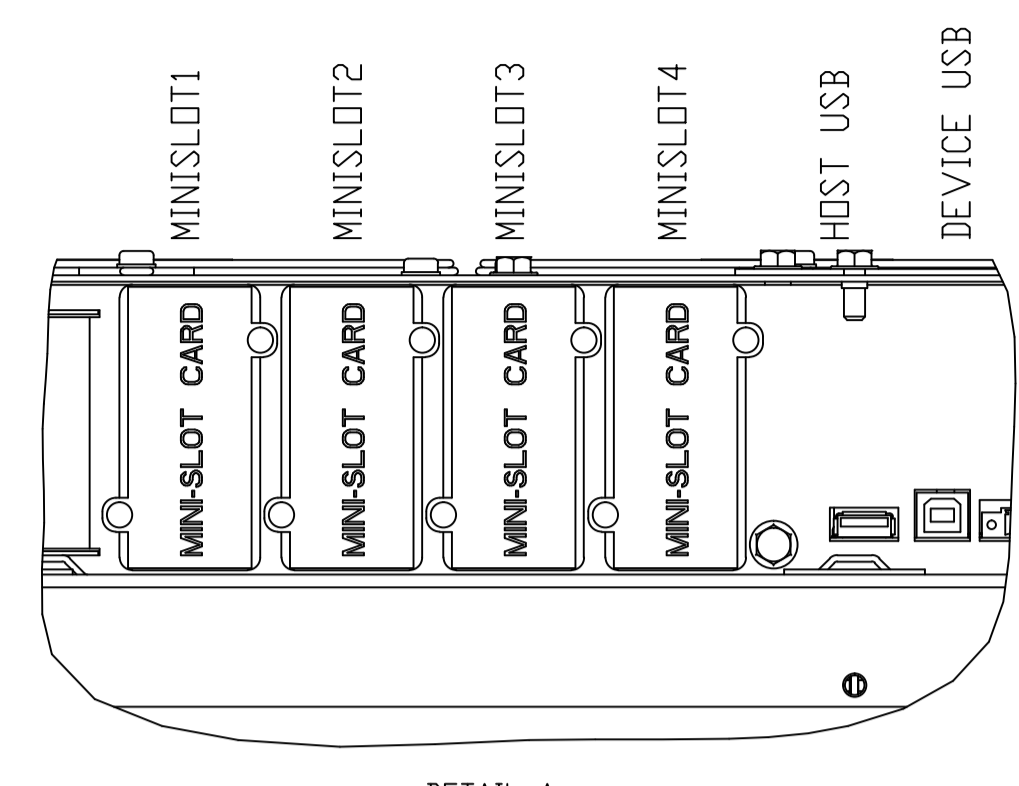
NOTE IF USING WITH IAC-T, THE MINIMUM RECOMMENDED SIZE OF OUTPUT PHASE WIRE IS (2) 4/0 PER PHASE.

- NOTES:
- THE SYSTEM MUST BE INSTALLED ON A LEVEL FLOOR SURFACE SUITABLE FOR COMPUTER OR ELECTRONIC EQUIPMENT.
 - UPS COMES WITH REMOVABLE BOTTOM ENTRY CONDUIT LANDING PLATE. TOP ENTRY POWER CONDUIT LANDING IS THROUGH AN OPTIONAL SIDE CAR. REFER DRAWING P-110000128 FOR TOP ENTRY CONDUIT LANDING OPTION.
 - CONTROL WIRE ENTRY THROUGH REMOVABLE CONTROL LANDING PLATE.
 - THE SYSTEM MUST BE INSTALLED IN A TEMPERATURE AND HUMIDITY CONTROLLED INDOOR AREA FREE OF CONDUCTIVE CONTAMINANTS.
 - AMBIENT TEMPERATURE RANGE 5-40degC [41-104degF] AT AN ELEVATION UP TO 1500M WITHOUT DERATING. STORAGE TEMPERATURE -25 to +55degC. RELATIVE HUMIDITY (OPERATING AND STORAGE) 5% TO 95% MAX NON CONDENSING.
 - UPS CABINET CLEARANCES:
FRONT OF THE CABINET: 914mm[36.0"]
FROM TOP OF THE CABINET: 457mm[18.0"] ALWAYS IN ZONE-1 AND ZONE-3
ZONE-2 CAN BE LESS THAN 457mm[18.0"] WITH REAR SERVICE ACCESS
FROM BACK OF THE CABINET WITH REAR EXHAUST: 457mm[18.0"]
 - MINIMUM REQUIRED AIR FLOW FOR CABINET AT FULL LOAD IS 1200 CFM.
 - THE UPS CABINET CAN BE INSTALLED IN LINE-UP-AND-MATCH OR STANDALONE CONFIGURATIONS.
 - ALL WIRING IN ACCORDANCE WITH NATIONAL AND LOCAL ELECTRIC CODES.
 - WEIGHT OF THE CABINET DOES NOT INCLUDE CUSTOMER WIRING.
 - AC INPUT TO UPS RECTIFIER: 3 PHASES, GROUND, WYE.
AC OUTPUT TO LOAD: 3 PHASES, GROUND.
AC INPUT TO UPS BYPASS: 3 PHASES, GROUND, WYE.
DC INPUT TO UPS (EXTERNAL BATTERY ONLY): POSITIVE, NEGATIVE, GROUND.
 - SPECIFICATIONS ARE SUBJECT TO CHANGE.

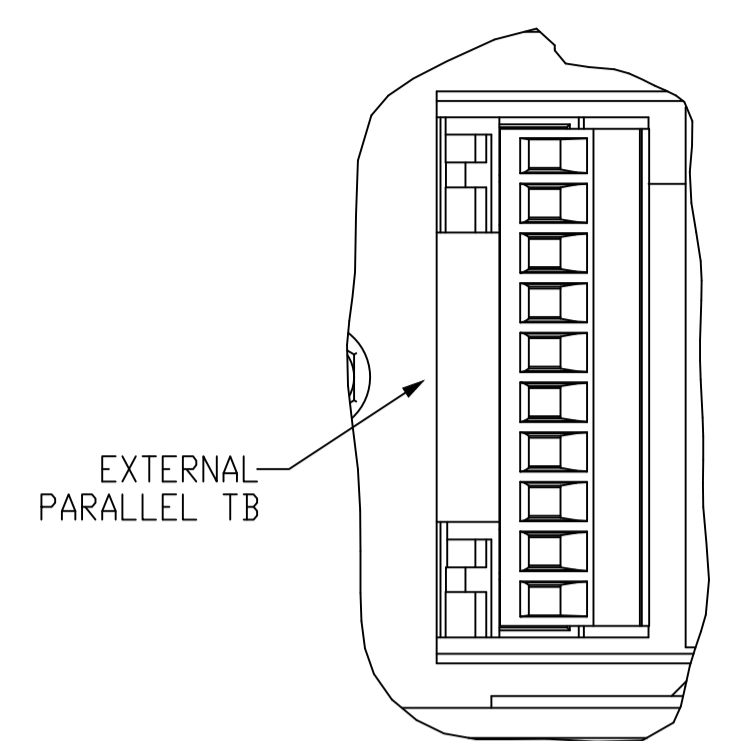
METRIC		EATON CORPORATION		EATON	
DIMENSIONS ARE IN MILLIMETERS AFTER PLATING DIMENSIONS AND TOLERANCES IN ACCORDANCE WITH ASME Y14.5M-1994. SEE NOTES FOR TOLERANCES.					
DESCRIPTION: 93PM-150KW CAPACITY UPS SITE PLAN					
ORIGINATED: WALLACE, T	10FEB2014	ECD: ECD-137391	NAME:	REVISION: 04	SIZE: A1
MODIFIED: MULE, V.	28-MAR-2018			STATE: RELEASE	SCALE: 7/100
CHECKED:		DOCUMENT TYPE:	P-110000274		SHEET:
SAFETY:		PROD-E DRAWING			1 OF 2
APPROVED:					

NOTE: THIS DOCUMENT IS THE PROPERTY OF EATON CORPORATION AND IS CONFIDENTIAL AND PROPRIETARY. IT IS NOT TO BE REPRODUCED OR TRANSMITTED IN ANY FORM OR BY ANY MEANS, ELECTRONIC OR MECHANICAL, INCLUDING PHOTOCOPYING, RECORDING, OR BY ANY INFORMATION STORAGE AND RETRIEVAL SYSTEM, WITHOUT THE WRITTEN PERMISSION OF EATON CORPORATION. THIS DOCUMENT IS THE PROPERTY OF EATON CORPORATION AND IS CONFIDENTIAL AND PROPRIETARY. IT IS NOT TO BE REPRODUCED OR TRANSMITTED IN ANY FORM OR BY ANY MEANS, ELECTRONIC OR MECHANICAL, INCLUDING PHOTOCOPYING, RECORDING, OR BY ANY INFORMATION STORAGE AND RETRIEVAL SYSTEM, WITHOUT THE WRITTEN PERMISSION OF EATON CORPORATION.

CUSTOMER CONTROL WIRE CONNECTIONS



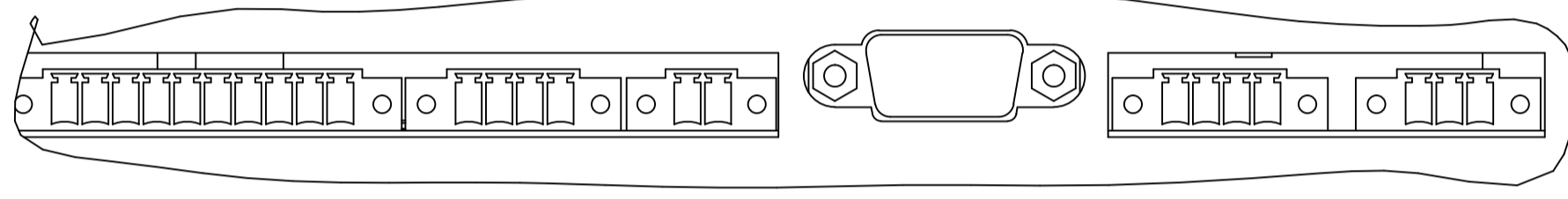
DETAIL A



DETAIL C

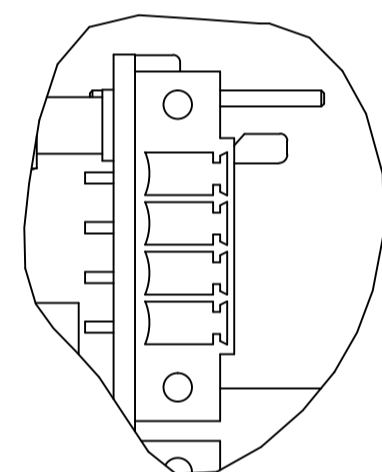
- 1 PULL CHN
 - 2 GND_S
 - 3 CANBH
 - 4 CANBL
 - 5 GND<ISP>
 - 6 EARTH
 - 7 CANBH
 - 8 CANBL
 - 9 GND<ISP>
 - 10 EARTH
- PARA CAN BUS IN
PARA CAN BUS OUT

- 1 ALM_5 RTN
 - 2 ALM_5
 - 3 ALM_4 RTN
 - 4 ALM_4
 - 5 ALM_3 RTN
 - 6 ALM_3
 - 7 ALM_2 RTN
 - 8 ALM_2
 - 9 ALM_1 RTN
 - 10 ALM_1
- CUSTOMER INPUT ALARMS
- 1 GND-E
 - 2 GND-ISO
 - 3 CANBL
 - 4 CANBH
- CUSTOMER CAN
- 1 CANBL_1
 - 2 CANBL_1
- 1 TX
 - 2 RX
 - 3
 - 4 GND-ISO
 - 5 RS232
 - 6
 - 7
 - 8 +12V_ISO
 - 9
 - 10



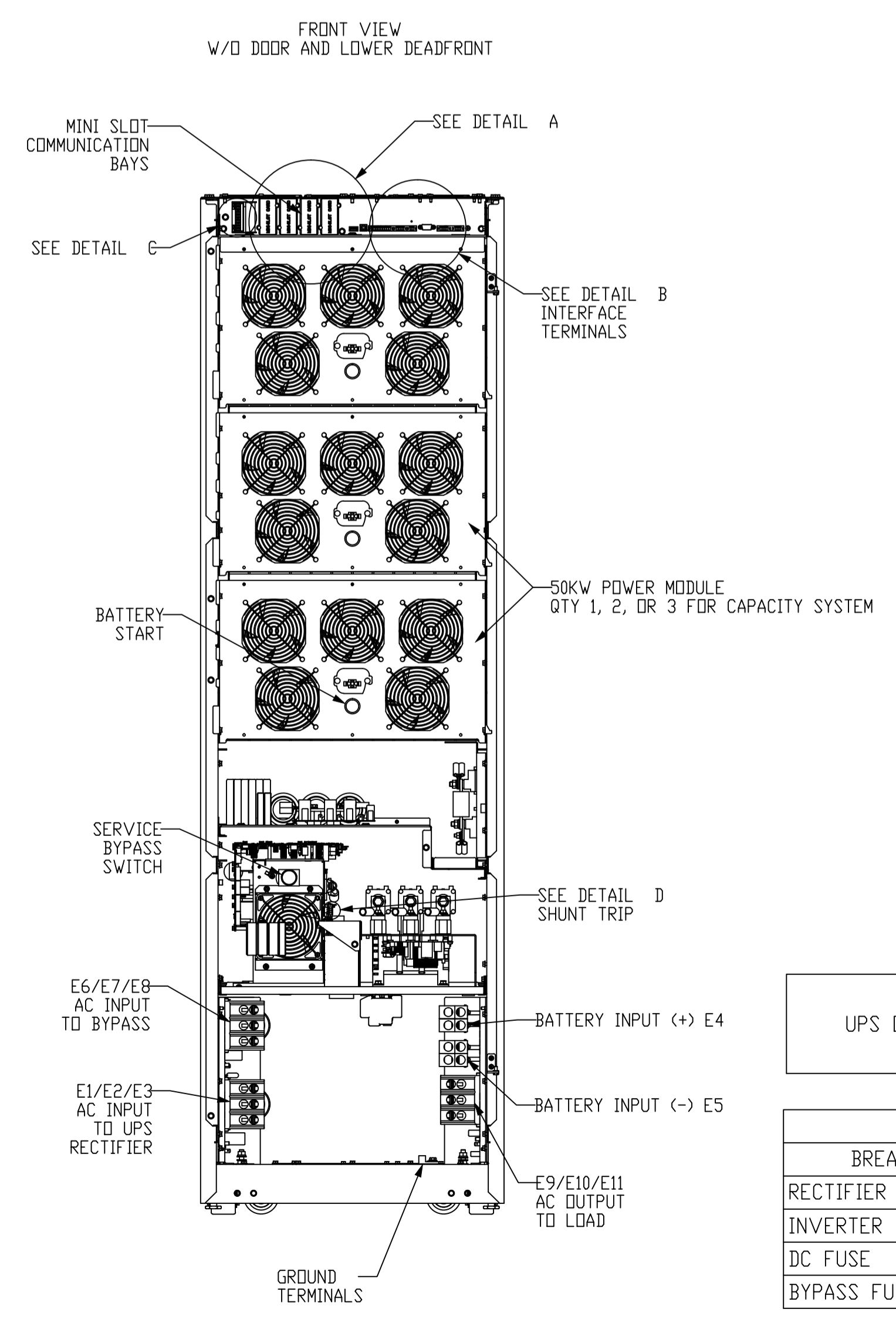
DETAIL B

UPS SHUNT TRIP TERMINAL

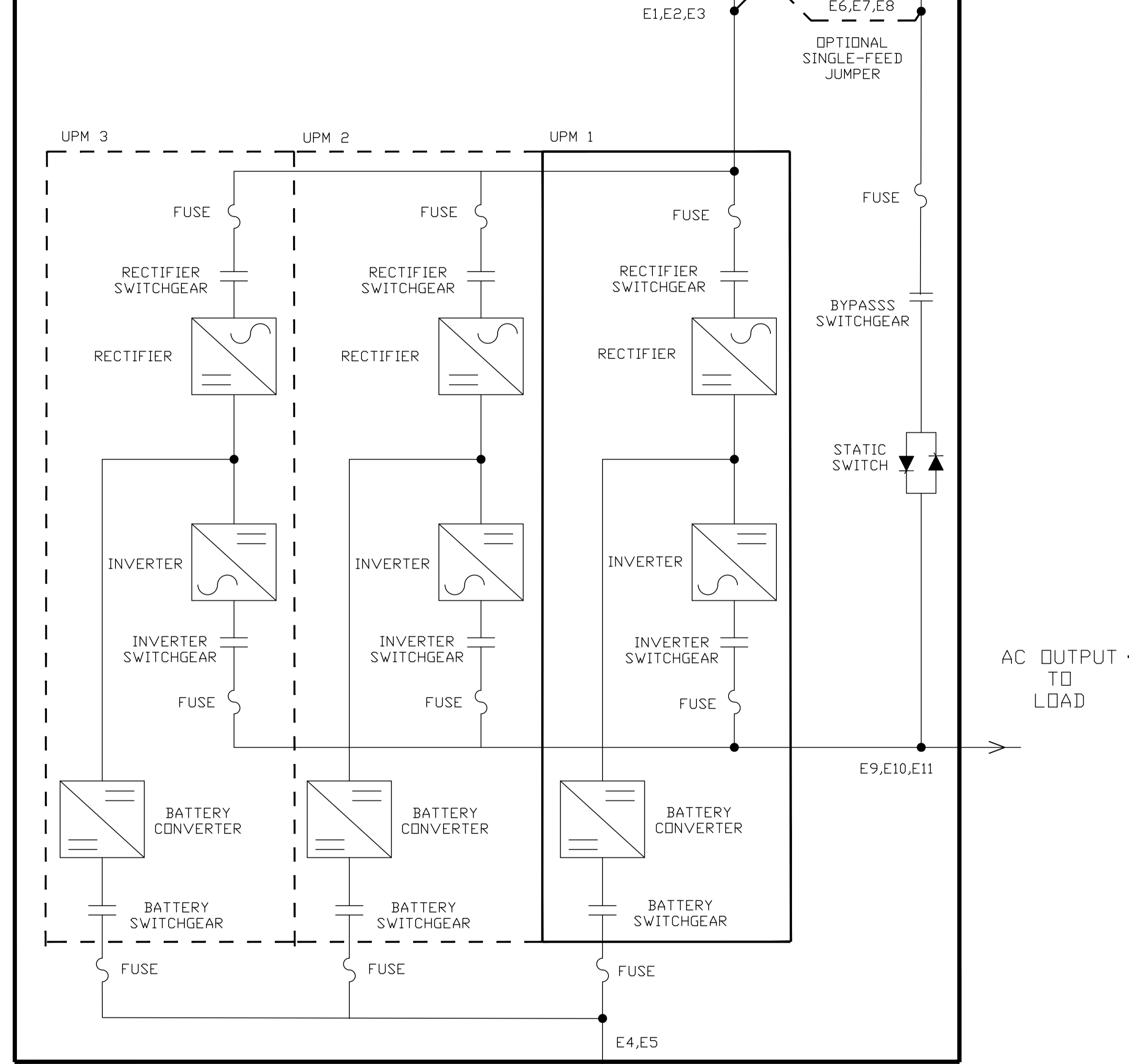


DETAIL D

- 4. NOT USED
- 3. NOT USED
- 2. 48Vdc BATTERY SHUNT TRIP -
- 1. 48Vdc BATTERY SHUNT TRIP +



UPS CABINET



NOTE: AC INPUT TO RECTIFIER IS NOT USED IN SINGLE FEED CONFIGURATION. DASHED LINES INDICATE OPTIONAL FEATURES/COMPONENTS.

UPS ONLY	PACKAGED ENVELOPE DIMENSIONS MM [IN]		
	WIDTH	DEPTH	HEIGHT
	784 [30.87]	1230 [48.43]	1975 [77.76]

BREAKER AND FUSE INFORMATION - 93PM UPS			
BREAKER/FUSE APPLICATION	MANUFACTURER	PART NUMBER	QUANTITY/LOCATION
RECTIFIER INPUT FUSE	BUSSMANN	160FEE	3 PER POWER MODULE (UPM)
INVERTER OUTPUT FUSE	BUSSMANN	160FEE	3 PER POWER MODULE (UPM)
DC FUSE	BUSSMANN	F/WH-200B	6 PER UPS
BYPASS FUSE	BUSSMANN	170M3421	3 PER UPS

METRIC		EATON CORPORATION	
DIMENSIONS ARE IN MILLIMETERS AFTER PLATING. DIMENSIONS AND TOLERANCES IN ACCORDANCE WITH ASME Y14.5M-1994. SEE NOTES FOR TOLERANCES.			
DESCRIPTION: 93PM-150KW CAPACITY UPS SITE PLAN			
ORIGINATOR: WALLACE-T	DATE: 10FEB2014	ECD: ECD-137391	NAME:
MODIFIED: MULE V.	DATE: 28-MAR-2018	DOCUMENT TYPE: P-110000274	REVISION: 04
CHECKED:			STATE: RELEASE
SAFETY:			SHEET: 2 OF 2
APPROVED:			