

M0007008C

# **SANUPS**

UPS Control System

**SANUPS**  
**SOFTWARE**  
S T A N D A L O N E

## **Install Guide**

for Windows

**SANYO DENKI**



- ※ Windows® is a registered trademark of Microsoft Corporation in the USA and other countries.
- ※ Java™, and all trademarks and logos related to Java™ are trademarks or registered trademarks of Sun™ Microsystems, Inc. in the USA and other countries.
- ※ All other product names and company names are registered trademarks or trademarks of their respective companies.

**Disclaimer**

- (1) The unauthorized reproduction or reprinting of this software and its documentation, in part or whole, is strictly prohibited. All rights are reserved.
- (2) This product has been thoroughly inspected prior to publication; please notify the manufacturer of any defects, omissions, or errors.
- (3) The manufacturer reserves the right to modify the contents of this product without notice.
- (4) Before using this product, first carefully read this User Manual and understand the product's functions. Under no circumstances will the manufacturer accept any responsibility for any situations resulting from the use of this product.

# Contents

<b>1. Introduction.....</b>	<b>1</b>
1.1. Operating Environment.....	1
1.2. Limitations .....	2
<b>2. Before Installation.....</b>	<b>2</b>
2.1. UPS Settings.....	2
2.2. Connection to the UPS .....	2
2.3. Operating Environment.....	3
<b>3. Installation .....</b>	<b>4</b>
3.1. Starting the Installation program.....	4
3.2. Product License.....	5
3.3. Selecting the Destination Location.....	5
3.4. Selecting the Program Folder .....	6
3.5. Verifying the Start of File Copy .....	6
3.6. Copying the Files (Actual Installation) .....	7
3.7. Completing the Installation.....	7
<b>4. Setup .....</b>	<b>8</b>
4.1. UPS Connection Setup Function .....	8
4.1.1. UPS Connection Setup Procedure .....	8
<b>5. SANUPS SOFTWARE STANDALONE Operation.....</b>	<b>12</b>

## 1. Introduction

The SANUPS SOFTWARE STANDALONE has been designed to provide a safe, automatic shutdown of UPS-connected computers in the event of a power failure.

### 1.1. Operating Environment

Computer: AT compatible

CPU: Pentium III 500MHz (or greater)

RAM: Minimum of 32 MB (64 MB or greater is recommended)

Available hard disk space: Minimum of 95MB

Display: Minimum of 640 x 480 pixel resolution

OS: Windows® NT 4.0 <sup>(\*1)</sup>, Windows® 2000 , Windows® XP(x86, x64) ,  
Windows® Server 2003(x86, x64) <sup>(\*2)</sup> ,  
Windows® Server 2003 R2(x86, x64) <sup>(\*2)</sup> ,  
Windows® Vista (x86, x64) <sup>(\*3)</sup> , Windows® Server 2008(x86, x64) <sup>(\*4)</sup>  
Windows® Server 2008 R2(x64) <sup>(\*4)</sup> , Windows® 7(x86, x64) <sup>(\*5)</sup>

(\*1) Service Pack 6 or above

(\*2) Standard Edition or Enterprise Edition

(\*3) Business , Enterprise or Ultimate

(\*4) Standard , Enterprise or Web Server

(\*5) Professional , Enterprise or Ultimate

If the computer powers off automatically when the OS is shut down, consider the following:

Certain computers may not start automatically, although power is supplied; for these computers to start up simultaneously with the UPS, the computer settings may require some adjustment. Keep in mind that not all computers permit such settings, and always consult with the computer manufacturer before building any system.

## **1.2. Limitations**

The SANUPS SOFTWARE STANDALONE is intended to control the power of a single computer connected to a single UPS. This presents some limitations, the details of which are listed below.

If any of these limitations are found to present a problem, the optional software (sold separately) may be used to counteract the problem. Prior to using the optional software, make sure that the SANUPS SOFTWARE STANDALONE is removed (uninstalled) from the computer.

- (1) If another device is receiving power from the same UPS, its power supply will be synchronized (ON/OFF) with that of the computer which has the software installed. The user must ensure that this configuration does not cause any problem to the device.
- (2) Although a UPS may support multiple systems, the systems cannot be controlled separately. All systems will have a single, common power control.

## **2. Before Installation**

### **2.1. UPS Settings**

Set the UPS to "W/S (Workstation) Mode".

If a serial interface card or a LAN interface card is used for connecting the computer, then the transmission mode must be set for the UPS.

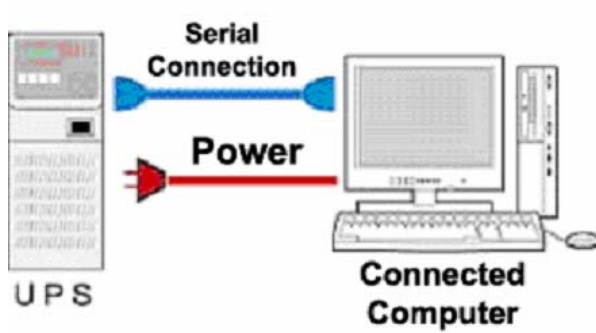
Refer to the section titled "Switching to W/S (Workstation) Mode" in the UPS User Manual or the serial interface card.

### **2.2. Connection to the UPS**

Connect the UPS to the computer using the serial cable provided with the SANUPS SOFTWARE STANDALONE.

### 2.3. Operating Environment

The installed SANUPS SOFTWARE STANDALONE is used to control the power of a single computer connected to a single UPS. The UPS and the load (the computer) are connected with a serial cable, as shown in the illustration below.



### 3. Installation

This section explains the installing procedure of the SANUPS SOFTWARE STANDALONE on Windows 2000 or latter. When installing it on WindowsNT, execute Setup.exe in the WinNT folder on the CD-ROM, then proceed according to the installer to install.

**The following operations should only be performed by a user with Administrator privileges.**

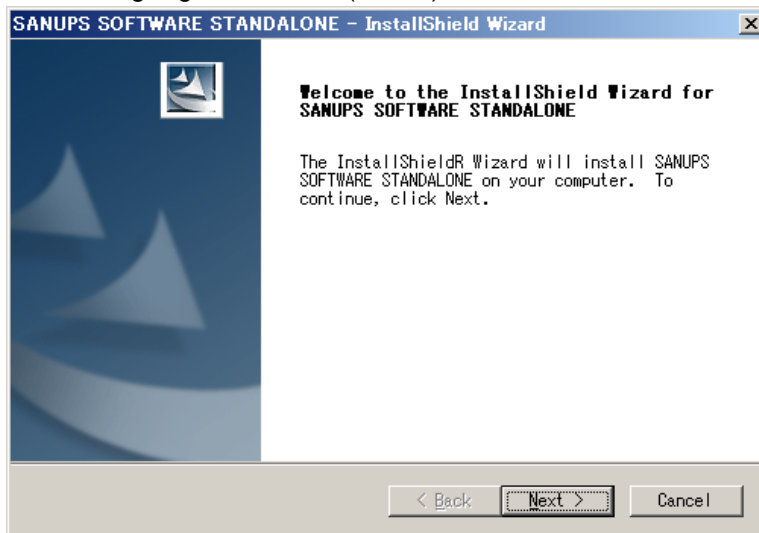
#### 3.1. Starting the Installation program

- (1) Insert the SANUPS SOFTWARE STANDALONE CD-ROM into the CD-ROM drive.
- (2) The installation program starts automatically, and the following window is displayed:



**If the installation program doesn't start automatically, double-click Setup.exe on the CD-ROM to start installation manually.**

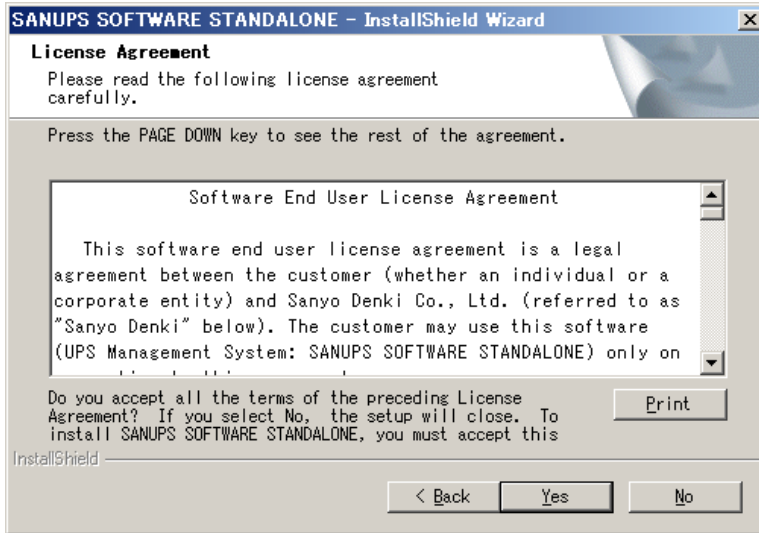
- (3) Select the language, and click (select) the "OK" button.



- (4) Click the "Next" button to proceed.

### 3.2. Product License

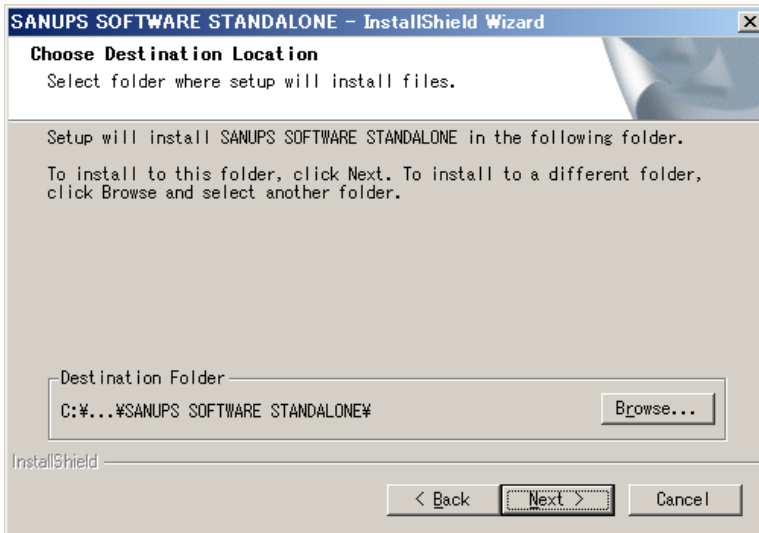
- (1) The License Agreement window is displayed.



- (2) Click the "Yes" button to continue the installation.

### 3.3. Selecting the Destination Location

- (1) The Destination Folder selection window is displayed.



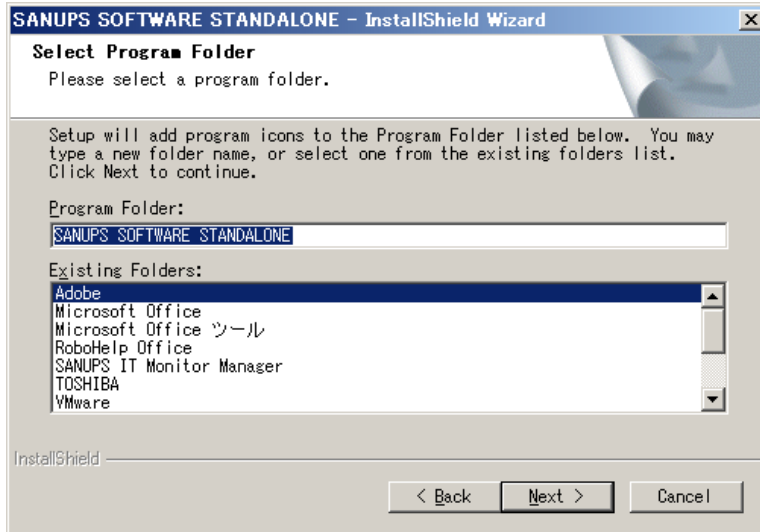
The "Destination Folder" can be modified in this window, if necessary, by clicking the "Browse" button.

- (2) Click the "Next" button to proceed.



### 3.4. Selecting the Program Folder

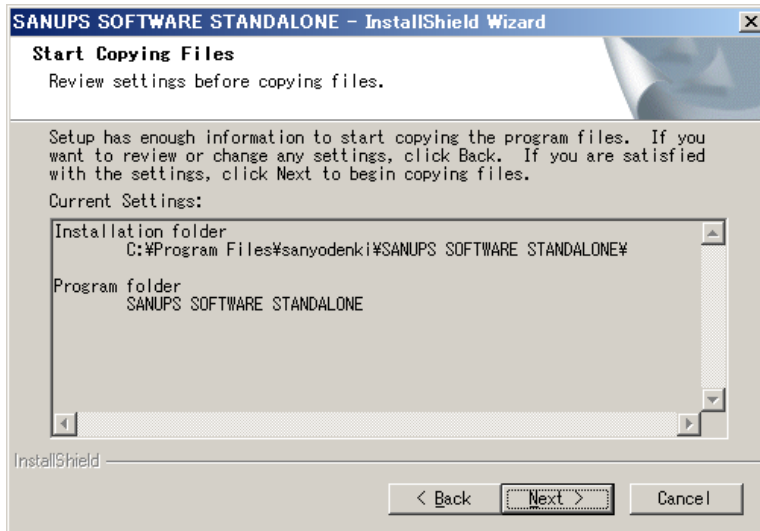
- (1) The program folder selection window is displayed.



- (2) Click the "Next" button once a selection has been made.

### 3.5. Verifying the Start of File Copy

- (1) The verification window for file copying is displayed.



- (2) Verify the settings, and then click the "Next" button to proceed.

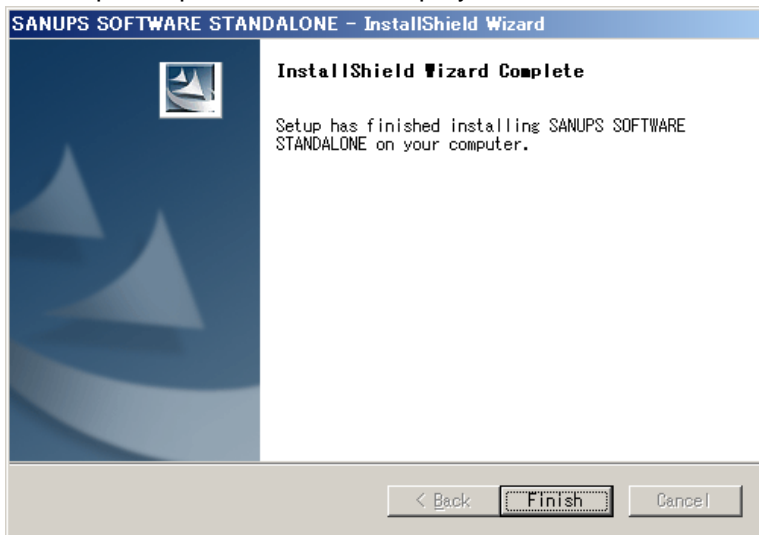
### 3.6. Copying the Files (Actual Installation)

The SANUPS SOFTWARE STANDALONE files are copied to the hard disk. The installation may take several minutes. Please wait until a message indicates that all files have been successfully copied.

If there is insufficient disk space available in the installation directory, the installation may fail. Make sure that there is sufficient available disk space for the operating environment.

### 3.7. Completing the Installation

(1) The Setup Complete window is displayed.



(2) Click the **"Finish"** button to end the installation program.

**\* After completing the software installation, the UPS connection needs to be established and configured in order to perform automatic shutdowns.**

## 4. Setup

After installing the SANUPS SOFTWARE STANDALONE, follow the instructions in Section 4.1, UPS Connection Setup Function (below), to configure the UPS connections. After configuring the connection settings, the SANUPS SOFTWARE STANDALONE will begin normal operations.

### 4.1. UPS Connection Setup Function

This function configures the serial port that is used to connect the computer and the UPS via a serial cable. If this serial port number is not configured properly (e.g. immediately after installation), the SANUPS SOFTWARE STANDALONE will automatically display the UPS Connection Information Setting window on startup, and the serial port can then be configured.

Proper configuration of this setting allows the computer to automatically shut down in the event of a power failure.

The serial port configured with UPS Connection Information Setting can be modified later.

#### 4.1.1. UPS Connection Setup Procedure

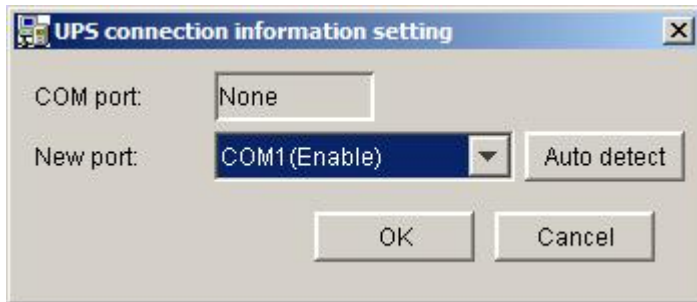
- (1) Connect the computer and the UPS with the serial cable.
- (2) Launch the SANUPS SOFTWARE STANDALONE from the Windows® Start menu.

##### Starting on Windows Server 2008 (Server Core)

Start the command prompt, and execute "SG4EXEC.BAT" after changing folder to the installation folder..

## Setup

- (3) The serial port connected to the UPS is automatically detected, and the UPS Connection Information Setting window is displayed. If automatic detection is successful, the detected serial port number is displayed in the “New port” field. (Note: If the computer uses A, B, etc., for indicating serial ports, read A as 1, and B as 2., etc.)



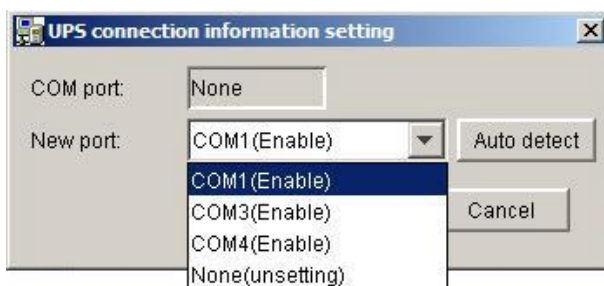
### **If automatic detection fails**

If automatic detection fails, the following dialog box is displayed:



In this situation, confirm that the serial cable is properly connected, UPS power is turned on, and that other applications are not using the same serial port. Retry automatic detection after confirming all of these conditions.

To check if other applications are using the serial port, display the selection list for the “New port” field, and see if “Disable” is displayed. If “Disable” is displayed for a port address, then the port is in use by another application.



## Setup

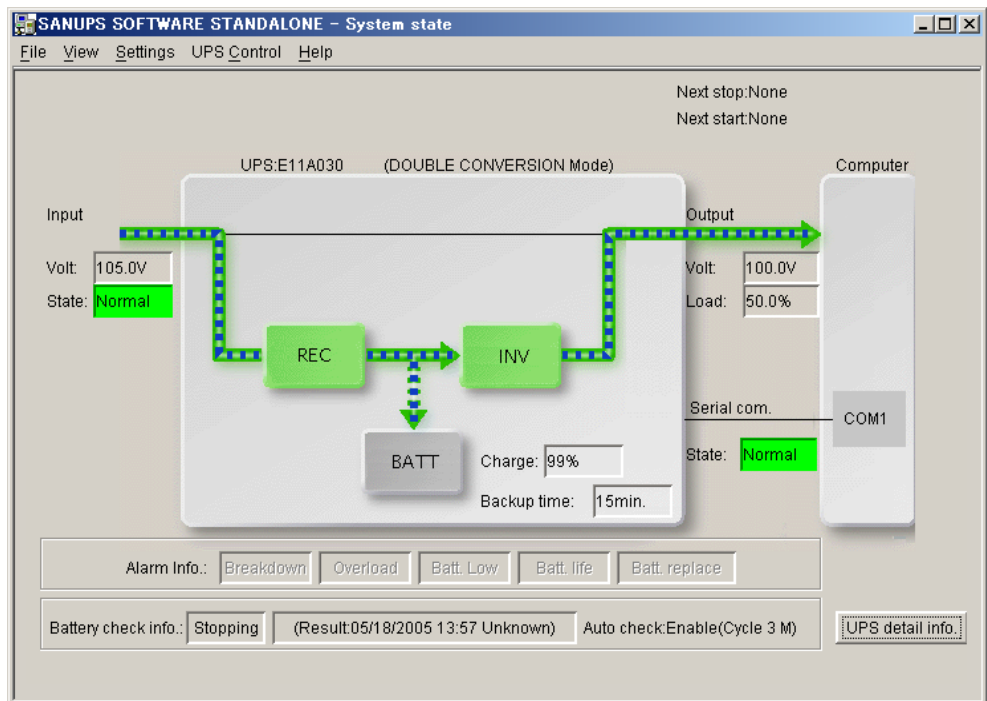
- (4) Click the “**OK**” button.
- (5) The Account Authentication window is displayed. Use the following default values:

**Administrator: upsadmin**

**Password: UpsAdmin** (the password is case-sensitive)



- (6) Click the “**OK**” button after entering the default authentication.
- (7) The current system status is displayed on the main screen (System State display window).



- (8) The following procedure describes how to verify that the automatic

## Setup

shutdown is working properly in the case of a power failure:

- (A) Intentionally cause an artificial power failure (for example, turn OFF the UPS power input).
- (B) Confirm that the power failure message is displayed on the screen.
- (C) After the message is displayed, restore the power to normal.

## **5. SANUPS SOFTWARE STANDALONE Operation**

Details on the configuration of the SANUPS SOFTWARE STANDALONE, and more information about shutdown operations, can be found in the system's "User Guide".

The User Guide is included as a PDF file on the Installation CD-ROM.